

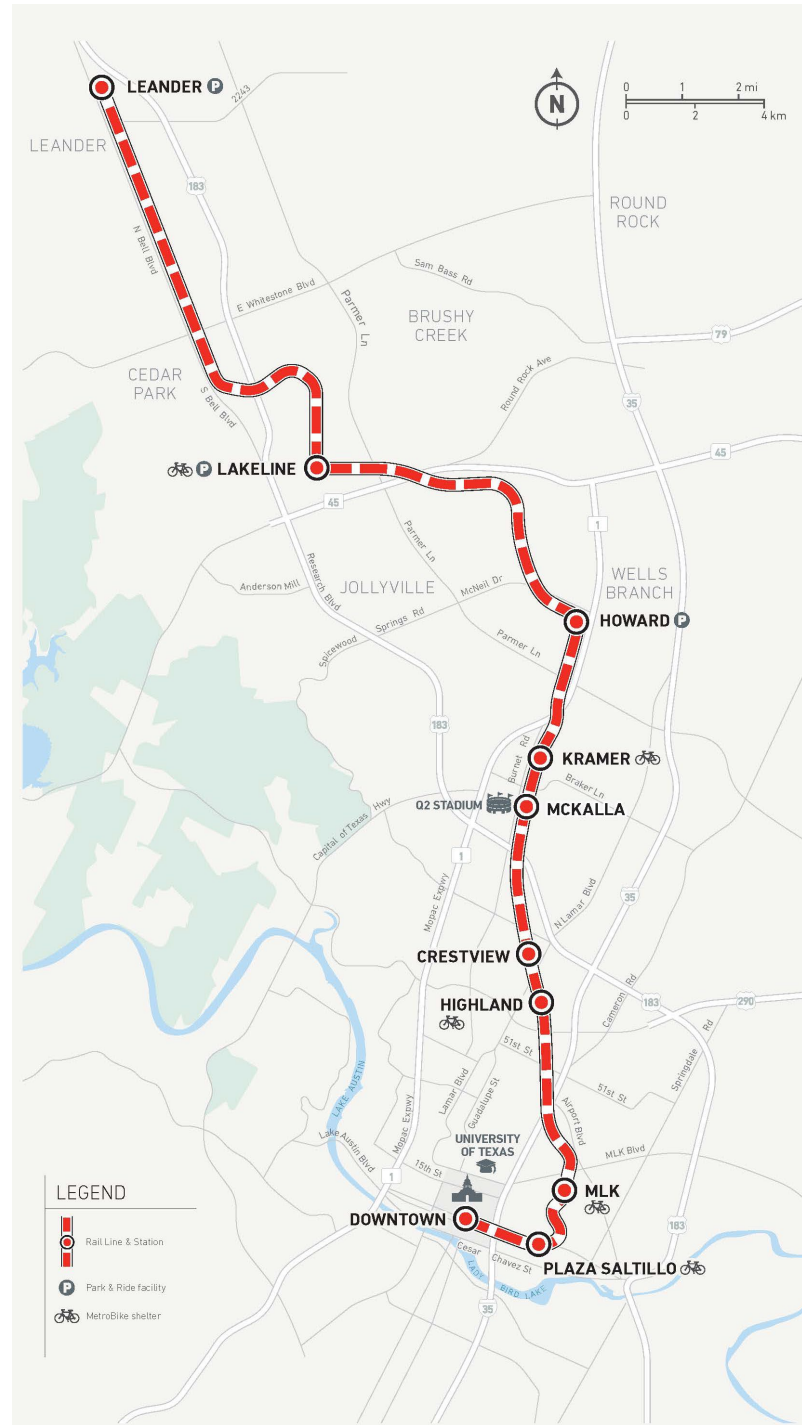


# CapMetro Rail Updates

Jacob Calhoun – Director, Transit System Enablement

# Red Line Initiatives

- McKalla Station
- RAISE Grant
- Red Line Trail Study
- Broadmoor Station



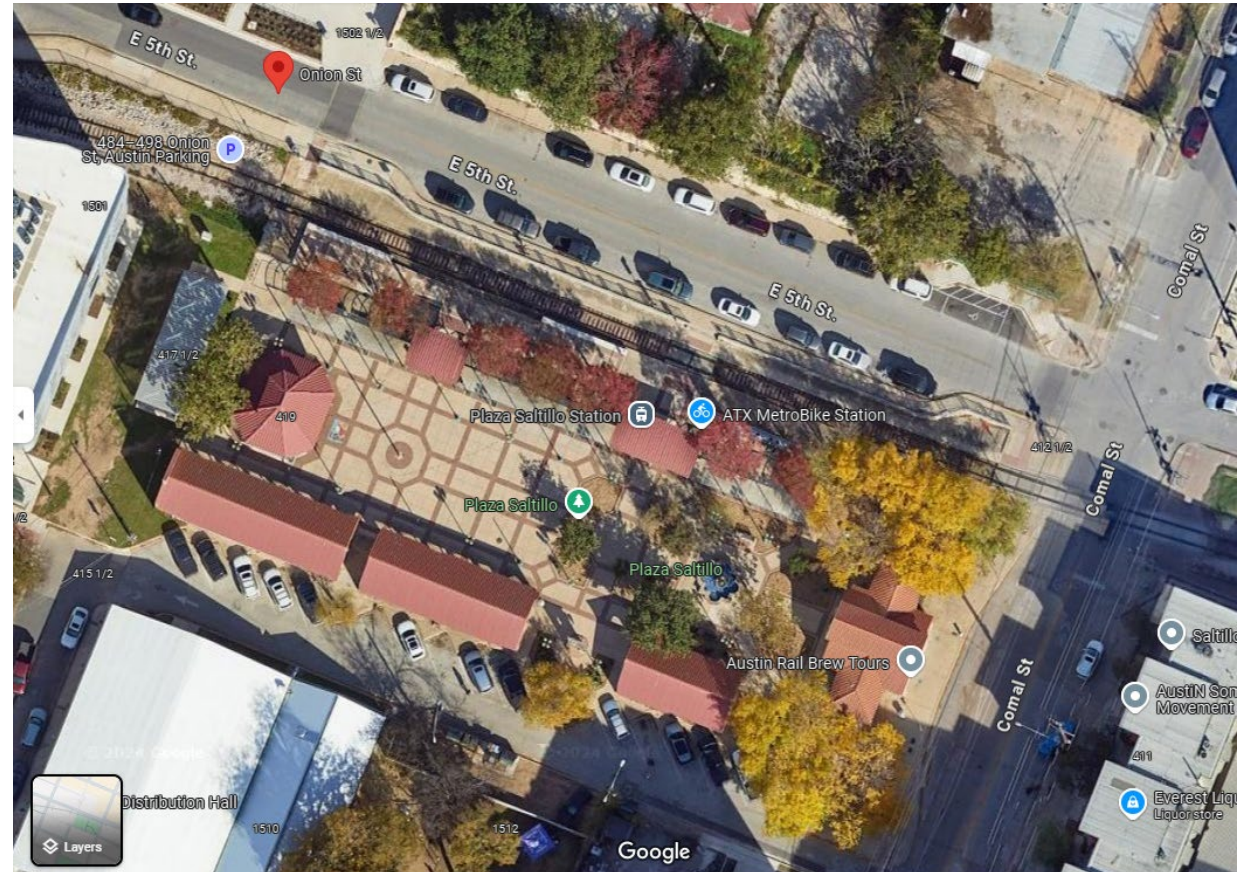
# McKalla Rail Station

- Stadium Capacity: 20,738
- Average Game Day Rail Ridership: 4,000-5,000
- Average Game Day Bus Ridership: 1,000-1,200
- ~ 30% Fans Use Transit



# Redline RAISE Grant

- Redline Double Track Project
  - Budget: \$32,184,000
- RAISE Grant: \$18 million (56%)
  - Local Share: \$14.184 million (44%)
    - CapMetro share: \$13.284 million
    - City share: \$0.9 million
- Project
  - Design completion (2025)
  - Construction (2026 – 2028)



# Redline Double Track Project – Onion St. to Austin Wye, Plaza Saltillo Platforms and Bike Trail

## OVERVIEW:

- Double Track from Onion to Austin Wye (Including wayside signalization & PTC Mod.)-0.70 miles
- Railroad crossings – 4 (Onion, Comal, Chicon, Robert T. Martinez)
- Plaza Saltillo Station Side Platforms (North & South) – Length 280 feet each.
- Reconfiguration of 5<sup>th</sup> Street between Navasota and Chicon – One way WB.
- Sidewalk & Shared Use Path – Onion to Robert T. Martinez. – 0.70 Miles



E. Timbes – Austin Wye

# Red Line Trail Concept

- Continuous trail network that generally follows CapMetro's 32-mile Red Line commuter rail corridor
- Vision for an All Ages and Abilities regional urban trail with strong transit accessibility and connections to nearby trails and bike routes
- Red Line Trail Study completed in August 2024



# Implementation



The Red Line Trail Study demonstrates where the trail is feasible within the Rail ROW, and governmental jurisdictions would take next steps to implement the vision through preliminary engineering and design.



The timing and implementation phase will range by segment depending on the complexity that it presents and the funding available.



The implementation of the trail would depend on the funding available to construct the trail within each jurisdiction.



CapMetro is looking forward to the collaboration ahead to continue building out the trail.

# Broadmoor Rail Station

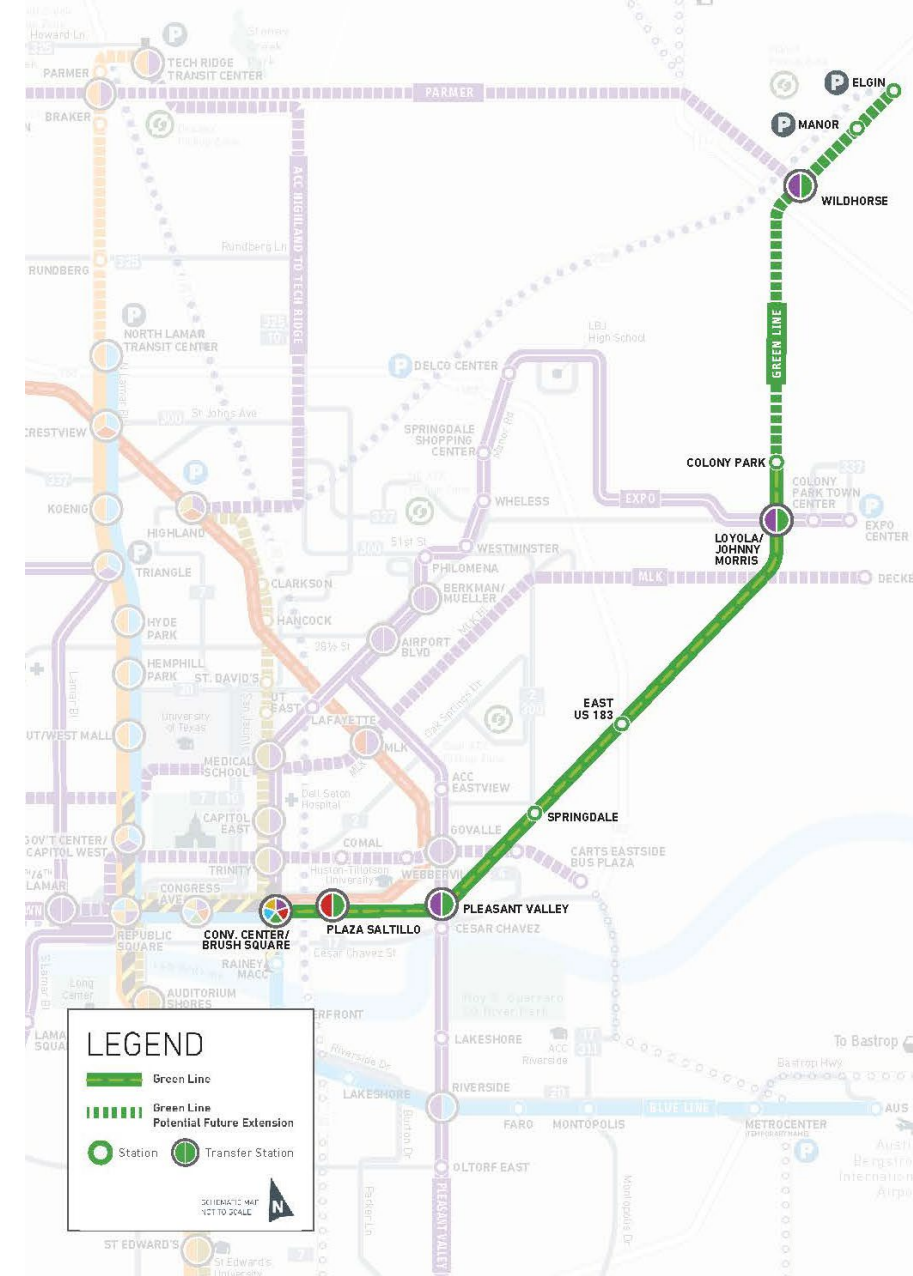
- New Rail station adjacent to Uptown ATX development
- Developer agreements in discussions
- Includes new platforms, drainage & track improvements along with Red Line Trail extension





# Green Line Rail

- Green Line is a later investment in the Project Connect financial model
- Initial investment of Green Line runs from Downtown Station to Colony Park
- CapMetro's supportive investments laying the groundwork for the Green Line
  - RAISE Grant Implementation – 55% USDOT funded
  - Property Acquisition – Support transit service
  - Track Improvements – Improve freight service
- CapMetro seeking complementary funding opportunities to advance Green Line



CapMetro

Thank you!